

Project Term 2019

**Thinking, Imagining, Creating...
to Make the World a Better Place**



March 23 - April 2, 2019

Academy of the Sacred Heart
Bloomfield Hills, Michigan

PROJECT TERM 2019

Thinking, Imagining and Creating!

Welcome to Project Term 2019! Since 1974, Project Term has been an integral part of the total curriculum in the Upper School. This unique program provides an opportunity for students to explore and learn in a focused unit of study. Incorporating the *Goals and Criteria* of a Sacred Heart education, Project Term allows students and faculty to plan programs jointly, thus offering hands-on learning in a variety of fields. Participants gain exposure and increased awareness of varied communities and cultures. How enriching this time can be for all who participate and what a rare opportunity provided for learning, adventure and fun. Welcome to Project Term 2019!

Project Dates: March 23 - April 2, 2019
(Departure dates vary for each experience.)

PROJECT TERM GOALS

Each program is created, planned, and implemented based on the interests of the students, the expertise and resources of the faculty, and the availability of programs which match our criteria. Based on the *Goals and Criteria*, Project Term programs must demonstrate the following:

I. *"A personal and active faith in God"*

By participating in the Project Term programs, students are able to grow in their faith, trust in others, and encourage shared reflections in the community.

II. *"A deep respect for intellectual values"*

Programs must emphasize students' growth in the processes of observation and questioning, and must demonstrate an ability to synthesize information. The preparation of each program must demonstrate intellectual mastery.

III. *"A social awareness which impels to action"*

Projects should include social analysis and an opportunity for participants to initiate change where necessary.

IV. *"The building of school community"*

Programs should create opportunities for participants to work together to achieve a communal atmosphere while nurturing their communication skills.

V. *"Personal growth in an atmosphere of wise freedom"*

Programs should create opportunities for participants to grow in their ability to make decisions and ultimately to reflect on them. Through Project Term programs, students realize their self-worth and learn how to make wise choices.

PROJECT TERM REQUIREMENTS

- I. All Project Term experiences must incorporate the *Goals and Criteria* of Sacred Heart education. Project Term activities are generated by faculty in accordance with the following specific established criteria: **
- A) An Upper School faculty member or Academy of the Sacred Heart faculty or staff member must be on every project.
 - B) No parent may chaperone any project unless he or she is employed by Sacred Heart or the spouse of a Sacred Heart employee.
 - C) If an employee (or spouse) of Sacred Heart does chaperone a project, he or she cannot chaperone an experience in which his/her daughter participates.
 - D) All non-faculty chaperones must be at least 25 years of age.
 - E) The objectives of the project must be clearly defined.
 - F) The Project Term moderator must have a daily agenda available prior to departure with specific daily activities.
 - G) Accommodations and meals should be appropriate to the experience and not be excessive. All projects must model the elements of simple living.
 - H) Projects cannot be restricted to nor designed expressly for members of a specified course or co-curricular group.
 - I) Away projects may start on Saturday, March 23 and must conclude by Sunday, March 31 (the only exception allowed would be due to an unusual travel arrangement made by the Project Term team).
 - J) Home experiences may begin Saturday, March 23 and conclude on Tuesday, April 2.
 - K) All students must be present for the closing activities including the Output Assembly. Failure to attend output assembly will result in no credit issued for Project Term.
 - L) **The Administration reserves the right to withhold placement of a student in any given experience.**

** *All criteria are subject to the discretion of the Head of School and the Associate Head of School.*

II. PROJECT TERM SELECTION

On Thursday, October 18 at 6:00 PM the community gathered for International Dinner and Project Term Kick-off. The purpose of this meeting was to introduce the Project Term offerings and to answer pertinent questions.

All new/transfer students **must** choose a group experience. Students in Grades 11 and 12 may choose a group or individual experience. Students in Grades 9 and 10 must choose a group activity. Questions regarding this may be directed to Ms. Hehs.

Selection by Lottery:

Each student (by class) will select a lottery number. If all paperwork (health form, application/choice form, tuition assistance form [if applicable]), and deposit are submitted on time, students in Grade 12 receive first choice in order of their class lottery number, followed by Grade 11, Grade 10 and Grade 9.

If the appropriate paperwork is **NOT** turned in on time, a student loses her selection placement and will move to the last selection choice **in the school**. In the event that too many students choose one particular project, selection will be determined by lottery number, suitability to project, spirit of cooperation, and personal responsibility of the students involved. *The faculty and administration reserve the right to make final placement decisions.* **If a student has an incomplete Project Term experience from the previous year(s), she will lose her lottery selection placement.**

Additionally, the Finance Office reserves the right to deny placement of a student on her selected experience for financial reasons. We ask that families select a reasonable experience based on their individual financial situation.

III. LIVING THE MISSION

The *Goals and Criteria* of a Sacred Heart education define the school's mission. Using them as a lens through which the educational journey at Sacred Heart is viewed, experiential learning opportunities are created in ways which allow the community to live the mission. There is a call to form global citizens and to recognize wonder and hope in the students.

A Sacred Heart education has three essential dimensions: mystical, ethical and ecological.

The *mystical* dimension leads us to seek the depths of mystery (through experiences yielding awe and fascination) and interiority (a person's thoughts, feelings and reactions to the situation), and to give depth and meaning to life.

The *ethical* dimension leads us to recognize the sacredness in others and seek to be the face of God's mercy in the world.

The *ecological* dimension leads us to recognize the sanctity of the earth and the fostering of simple living.

The process of approaching each experience with these three dimensions in mind aims to enable each student to formulate a plan for how she intends to deepen the *Goals and Criteria* in her life. This self-reflection will result in fresh insights and re-commitment to her life's journey.

IV. PROJECT TERM ATTENDANCE

Each participant in Project Term is expected to participate fully in all activities including the preparation meetings, the actual experience, reflection and evaluation. During Project Term, attendance is required for all related events. Participants should be on time for all experiences and contribute to the positive attitude necessary for the success of the experience. Failure to actively participate in all activities could result in failure of Project Term, which is a graduation requirement.

V. PARTICIPANT REQUIREMENTS

Each participant must complete the following on time:

A) Registration Forms

Due to Upper School Office 8:10 a.m.

**Wednesday, October 24 (Grades 11 & 12)
Monday, October 29 (Grades 9 & 10)**

- Application/Choice Form
- Health Form
- \$150 deposit
- Copy of passport or Application for Passport, if applicable
- FACTS enrollment*
- Current Enrollment Contract*
- Good financial standing*

* Questions concerning these topics should be directed to the Finance Office.

Please note that once a student and family have selected and committed to participating in a Project Term (by returning the Application/Choice Form with three choices and 4/5 choices for students in Grades 9/10) they have reserved that position and will be held responsible for the choice (by lottery number) as well as the financial commitment since the cost of each experience has been calculated based on a certain number of participants.

B) Learning Contract

Due to Moderators: Wednesday, February 13

Due to US Office: Monday, February 25

All Learning Contracts must incorporate plans for preparation, individual and group objectives, daily plan, reflection, and evaluation. All Learning Contracts must be signed by student, parent, faculty moderator, and the Director of the Upper School, or her designee.

C) Payment for Project Term

Eligibility for an out-of-town PT experience includes the following financial requirements. **If these conditions are not met, students will forfeit their lottery number and placement.**

- prior year account balance in good standing
- current year Enrollment Contract has been signed and returned
- enrolled in FACTS payment system or tuition has been prepaid

Payment for Project Term to be paid via the FACTS Tuition Plan:

- First Payment: Thursday, November 15 (25%)
- Second Payment: Friday, December 14 (25%)
- Third Payment: Tuesday, January 15 (25%)
- Final Payment: Friday, February 15 (25%, less fundraising, less tuition assistance)

Payment Plans that do not utilize FACTS:

- First Payment Thursday, November 15 (50%)
- Final Payment, Friday, December 14 (50%, less fundraising, less tuition assistance)

Any fundraising money earned will be deducted from the final payment. Excess fundraising money will remain in the student's account.

If the second payment method is selected, checks should be made payable to the Academy of the Sacred Heart and either mailed to the Finance Office or turned in to the Upper School office. No payments are to be made to any other agency or sponsor.

In the event of non-payment or insufficient funds, a \$30 penalty fee will be assessed per month. If a student's account is not paid in full by February 15, she will not be permitted to participate in her selected experience and will be held accountable for any expenses we are unable to recover on date of cancellation.

If parents would like to arrange for a payment schedule other than those previously listed, or have questions about tuition assistance, they should contact Mrs. TenEyck in the Finance Office. Through the generosity of our parents at the International Dinner and through other fund raising efforts, limited funds are available for those with a demonstrated need.

The Academy of the Sacred Heart has made a commitment to raise funds through Annual Giving and private solicitation to make it possible for each student to have at least one experience which might not otherwise be possible during her four years. Recognizing the financial burden this may present, students whose financial accounts are in good standing and who are seeking assistance for this experience may complete the Tuition Assistance Application available in the Finance Office. All policies and procedures applicable to the Tuition Assistance Program for the Academy apply to the distribution of funds for Project Term. These grants do not exceed \$400 per student, and are only available for projects at or under \$2,000 for students in grade 9-11. For students in Grade 12, additional consideration may be provided. In order to be eligible for any financial assistance, students must earn \$250 through fundraising or work study (25 hours). Additional information will be provided later.

D) Project Term Journals

Due: Wednesday, April 3 (*at the beginning of the day*)

Each participant must complete a daily entry in the Project Term journal. The entry may be prompted by the faculty moderator depending on the activities of the day. The journaling should be reflective and thorough, not just a list of the daily activities. This journal should be turned in each day in order for the faculty moderators to review and comment. The journals will be turned in to the Dean of Students at the end of Project Term.

The Project Term journal must come to school with the participant on Wednesday, April 3 for the Closing Prayer Service and final journal entry, as prompted by the Head of School.

E) Individual Output

Each participant must complete an individual output (specified in the Learning Contract). Information pertaining to Individual Output will be provided at a later date.

F) Project Term Evaluations

Due: Wednesday, April 3

All student evaluations of the Project Term experience are due on this date. In addition, each participant will be required to plan and participate in group reflection and participate in output assembly.

Each student will receive a Pass or Fail grade for Project Term and written comments from the faculty moderator reflecting her participation in the project, based on her stated objectives. Written Project Term reports and grades will be provided to parents and posted on the Parent Portal.

If a student fails to complete all the required elements of the Project Term experience, she will be required to repeat an approved (by the US Project Term team) project during the following summer.

G) Group Output

In addition to completing an individual output, each student must also participate in developing and presenting a group output. While no official evaluation of the group output occurs, the final project will be previewed for appropriateness by the Moderator(s).

VI. STUDENT CONDUCT

Participants are expected to uphold the *Goals and Criteria* of Sacred Heart education, the policies of the Upper School Handbook, and in this case, the general conduct rules for Project Term.

All participants are expected and required to participate in all planned group or individual activities, except in case of illness (as reported to the Director of the Upper School). Should a student be so ill that she has to miss more than two days, the Project Term experience would be incomplete and therefore she would be required to make up the Project Term experience.

Whenever any of the policies are not followed, participants are in danger of violating the Project Term Learning Contract and thereby of failing Project Term. In the event of a Project Term failure, the student must make up the experience in a manner proposed by the student and approved by the Project Term Team.

In case of serious violation of these rules, students will be informed of the infraction by the faculty moderator and sent home (in consultation with the Director of the Upper School, the Head of School and the Dean of Students). **Any costs incurred for such an infraction will be paid by the student or her parents.**

VII. CELL PHONE POLICY

Project Term is an opportunity for students to learn through experience and thrive in community. The experiences students have on Project Term are not the same as those they have in the classroom. This is by design. In order to live the experience fully and avoid unnecessary security risks, cell phones and internet-enabled devices are not allowed on Project Term experiences. Each experience will have an individual policy about when and if these devices may be used. Cell phone rules on specific experiences are marked on the following pages.

In light of this policy, it is strongly recommended that your daughter has a wrist watch and a camera.

VIII. PARENT MEETING

All experiences require a parent meeting with the moderators. The date for this meeting will be announced before Christmas break.

INDIVIDUAL PROJECTS

Students in Grades 11 and 12 may propose Individual Projects. An Individual Project proposal must include identification of how the *Goals and Criteria* of a Sacred Heart education will be implemented. An Individual Project should also represent an experience which cannot necessarily be provided for a student through the regular school curriculum or by a family opportunity. **A \$50 deposit is required for students wishing to participate in an Individual Project.** The Upper School faculty will consider and approve all Individual Proposals. Students on local Individual Projects will be visited at their projects by either the local supervisor or another adult in the community. They are expected to participate in reflection activities with other students involved in local individual projects. Each Individual Proposal requires the following:

I. Supervision

Students participating in an Individual Project must have an in-situ supervisor (other than a faculty member or parent) who can provide site supervision, assist in daily planning, and provide participation in reflection and evaluation.

II. Learning Contract

- Objectives
- Daily Plan
- Output Program
- Reflection Process
- Evaluation

III. Area of Focus

When career exploration is selected for an Individual Project, and to maximize the opportunity, particular preparation will be required of that student. A student must:

- A. Review with her faculty moderator, the results of the MBTI and/or the CSSI (from her file) to see if she has shown some propensity toward the career chosen to explore.
- B. Read and summarize the Occupation Outlook Handbook's review of the career chosen. The summary should include:
 1. Education required to successfully pursue career path
 2. Employment variations
 3. Job market
 4. Income range

Upon completion of Project Term, the Individual Output should include some reflections and reactions of the student to the information gathered before Project Term. For example, did the student find that in the "real life" experiences, her MBTI and/or CSSI data ring true? And, was the first hand information gathered a match with the OOH research?

NETWORK OF SACRED HEART SCHOOL EXCHANGE
(Dates to be mutually agreed upon)

Application for Exchange experiences are due during the late winter/early spring of the year prior to making the Exchange. In order to qualify for exchange, students must be in good academic and social standing. The Exchange Coordinators at the student's home school and the intended exchange school handle the paperwork. Once she is accepted for an exchange experience, students and their families work out travel arrangements. The many advantages to exchange include seeing another part of the country/world, getting a taste of life away from home before college, experiencing life – academic, extracurricular, religious, and social – at another school, making new friends and building community within the Network.

Cost: \$50 administrative fee, plus airfare and spending money

CLOSE UP WASHINGTON D.C.
Washington, D.C.

Close Up programs are designed to give students an inside look at their democracy in action. Using the nation's capital as a living classroom, participants get a "close up" view of government - interacting with the people, processes and places that make Washington, D.C. so unique. Throughout the week, students explore D.C. and interact with students from all across the country. The program culminates with a banquet and dance, giving students the chance to unwind, say goodbye to their new friends and reflect on what they have learned during this experience.

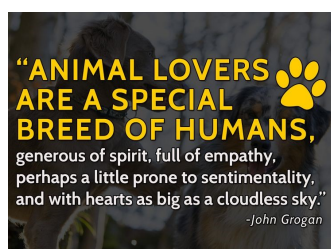
Cost: \$50 administrative fee, plus approximate tuition of \$2,000 and airfare

GROUP PROJECTS

All group experiences last seven (7) to nine (9) days within the Project Term window of March 23 to April 2, 2019, and are subject to availability and student interest. Each project must have the minimum number of students listed and necessary faculty moderators. If for any reason an experience needs to be canceled, the students' needs will be met with another experience. **A \$150 deposit is required for students wishing to participate in a Group Project.** The final project cost is dependent on actual travel costs at the time of Project Term and the number of participants in each group. All students must travel with Academy of the Sacred Heart arranged travel reservations and **MUST** travel with their group. *No frequent flyer tickets may be cashed-in for group travel.*

ANIMAL/NATURE LOVERS

Metropolitan Detroit, Michigan



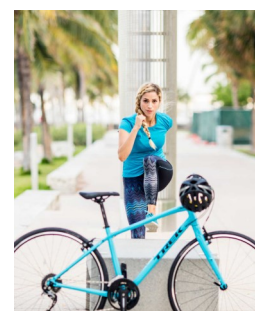
Students will be exposed to several different opportunities during this experience. They will potentially be involved with the non-profit organizations such as Leader Dogs for the Blind, the Bloomfield Hills Bowers Farm and the Belle Isle Nature Center. Additionally, they will visit Howell Nature Center to examine and explore the Global Village and to participate in a zip-line experience. They will shadow workers, learn about all of these organizations, assist with chores and take classes. This is a wonderful way to learn about a variety of different ways in which people interact with animals and how animals interact with people.

Cell Phones:	Checked in with Moderators each day
Means of Travel:	Van
Minimum # of Students:	8
Maximum # of Students:	12
Cost:	\$650

BIKING IN BUDAPEST

Budapest, Hungary

Experience one of the most beautiful cities in Europe on bike! See Budapest through an architectural, historical and cultural lens. Visit a 19th century Turkish bath, crawl deep within the earth in the caves of Budapest, wander the streets of the Buda Castle Quarter, attend a live performance in the world class opera house and learn much about Hungarian history and culture. You will bike through the city, enjoying architectural jewels and the beautiful Danube. In the evenings you will enjoy all the offerings of a cosmopolitan city. **Students must have a valid passport. A parent meeting is required before departure.**



Cell Phone:	Phones will be collected upon arrival
Means of Travel:	Airplane, Bike and Public Transportation
Minimum # of Students:	12
Maximum # of Students:	12
Cost:	\$2,700

CATALINA MARINE BIOLOGY & ISLAND ECOLOGY (CIMI)

Catalina Island, California

Catalina Island Marine Institute (CIMI) at Cherry Cove is a unique outdoor science school. It is one of three outdoor science schools on Catalina Island operated by Guided Discoveries. This program provides hands-on science experiences using state-of-the-art labs and equipment. One of the focuses of the experience is environmental stewardship. Program instructors will guide students through island terrestrial biology, marine biology labs and field activities. During the time on Catalina Island, the group will participate in day and night snorkeling, ocean kayaking, marine biology labs, desert ecology hikes, an astronomy night hike and much more.

Additionally, the group will spend their first night away on the historic Queen Mary and the last afternoon visiting Santa Monica Pier.



Cell Phones:	Phones will be collected upon arrival.
Means of Travel:	Plane, van
Minimum # of Students:	12
Maximum # of Students:	12
Cost:	\$1,950.00

FOLLOWING IN THE FOOTSTEPS OF ST. MADELEINE SOPHIE

Paris, France

French language recommended. Our identity is defined by the faith and educational philosophy of the Sisters of the Sacré Coeur (Sacred Heart). What was France like in the 1800s, when this all started? Who was Madeleine Sophie Barat before she was the Saint we know and honor today? How did a young girl who grew up in the French countryside during the French Revolution come to found a global network of schools still growing today? What are the values that hold us together through space and time?



As we journey to Sophie's own house, beneath the vineyards of Joigny, and as we travel the streets of Paris to retrace our "family" roots, you will be able to relive history and connect to our founders through the eyes of 21st century women. Join us on this experience for the mind and the Heart! Travelers will be willing to explore history, walk a lot and pack lightly, as we take trains and public transportation. **Students must have a valid passport. A parent meeting is required before departure.**

Cell Phones:	Phones will be collected upon arrival
Means of Travel:	Airplane and Public Transportation
Minimum # of Students:	12
Maximum # of Students:	12
Cost:	\$3,200

HIDDEN CANYON KAYAK

Lake Powell Arizona and Utah



From those who have traveled there before you, we know that the best way to see and explore the unrivaled beauty and grandeur of Lake Powell in Glen Canyon National Recreation Area - its deep canyons, geologic wonders and relics of human history - is by kayak. Hidden Canyon Kayak provides unmatched kayak tours of Lake Powell, a hidden gem of the Southwest.

This experience takes participants directly to the heart of the matter. Spend several nights on Lake Powell, camping out of a kayak. All levels of kayakers are welcome on this experience. No matter what level of experience kayakers arrive with, they leave with new skills and successes. Participants will also be able to see areas of the Glen Canyon National Recreation Area that can only be seen from a kayak. For anyone who have ever wanted to challenge herself by camping and kayaking, this is the experience for her! *A parent meeting is required before departure.*

Cell Phones:	Phones will be collected upon arrival
Means of Travel:	Airplane, Van and Kayak
Minimum # of Students:	12
Maximum # of Students:	12
Cost:	\$2,700

HUNGER AND HOMELESSNESS

Washington, D.C.

Amizade has created a “fair-trade learning program” in Washington, D.C. designed to focus on hunger and homelessness. Infused throughout the experience is discussion around affordable housing, racial justice and gentrification in our nation’s capital. The week will be spent exploring the history, causes and consequences of homelessness and food insecurity in the United States through service activities at a variety of community and non-profit organizations. An objective of this program is to have participants leave with a strengthened capacity to identify and address key opportunities to develop, support and advocate for change in their own cities.

Participants will engage in a number of service opportunities with organizations on the front lines of the fight to end homelessness, increase access to affordable housing and create a healthy, sustainable and accessible food system that is equitable for all.

Cell Phones:	Phones will be collected upon arrival
Means of Travel:	Plane, Van
Minimum # of Students:	12
Maximum # of Students:	12
Cost:	\$2,350



LEGACY AND LANDSCAPE: FOOTSTEPS OF GEORGIA O'KEEFFE

Santa Fe, New Mexico

The Legacy and Landscape experience will take participants in the footsteps of Georgia O'Keeffe. Journey to the land of *Piedra Lumbre* (Shining Rock) and immerse yourself in the crossroads of cultures. Located high on the desert mesa and surrounded by light-filled vistas, this land was settled by the ancient pueblo peoples, conquered by the Spanish and tamed by rugged adventurers. This expansive landscape continues to challenge the artist to capture its timeless beauty. Georgia O'Keeffe answered the desert's call, living and working at her beloved Ghost Ranch until her death in 1986. Listen as the desert speaks to you during your week-long retreat at the Ghost Ranch. During a sunset horseback trail ride and daily hikes, you will revisit the iconic imagery of O'Keeffe's paintings, with studio sessions a part of this experience. Visit historic Santa Fe with its galleries and churches. Tour Taos Pueblo, a world UNESCO Heritage Site, inhabited by native peoples for 1000 years. Walk this ancient landscape and explore and expand your life through art, history, archeology and the mystical.



Art supplies will be provided to support studio work. Participants will need to have a means to photograph landscape visited in various walking tours to support the studio sessions. Accommodations are southwest rustic, dormitory-style housing at the Ghost Ranch. *A parent meeting is required before departure.*

Cell Phones:	Phones will be collected upon arrival
Means of Travel:	Airplane, Bus
Minimum # of Students:	12
Maximum # of Students:	12
Cost:	\$2,475

MAKER

Bloomfield Hills, Michigan

Participants will experience the process of designing and manufacturing their own consumer good. Students will have to combine skills in art, design, math and computer science to develop their product. Students will meet engineers, see products roll off the assembly line and learn about the life cycle for the goods we use on daily basis. The experience will be spent both on campus and off campus at a variety of sites in metropolitan Detroit.

Cell Phones:	Phones will be collected
Means of Travel:	Van
Minimum # of Students:	8
Maximum # of Students:	12
Cost:	\$650

MARINE SCIENCE EXPLORATION

Wilmington, North Carolina

MarineQuest is the official marine science outreach program for the University of North Carolina Wilmington and the Center for Marine Science, providing students with opportunities to explore, discover and value our marine habitats. MarineQuest is more than just another day at the beach (in March); MarineQuest is making waves in environmental education! Experience the wonders of the coast through hands-on field and lab activities. All of the lessons highlight different fields of study within marine science. This program includes a SCUBA experience (pool) as well as discovering the marshes (through a variety of methods). Students will learn about marine technology, marine ecosystems, marine biology and more.

This experience in simple living also requires participants to share “house duties”, including cooking and light cleaning. Students will share space with one another in a rental home near UNC Wilmington. ***A parent meeting is required before departure.***



upon arrival	Cell Phones:	Phones will be collected
	Means of Travel:	Plane, Van, Boat
	Minimum # of Students:	12
	Maximum # of Students:	12
	Cost:	\$2,250

OUTREACH360: DOMINICAN REPUBLIC

Santiago, Dominican Republic



Travel to the Dominican Republic to live in and work at an orphanage. Live in basic accommodations (under mosquito netting) in a rural Dominican Republic orphanage. Participants will conduct a clothing drive in advance of the experience, and prepare lesson plans to be used at the orphanage and local school. Students may also assist in basic restoration and upkeep projects at the facility on the grounds.

Students must have a valid passport. Immunizations and region specific medications will be needed. Please confer with your family physician for specific details and costs. ***A parent meeting is required before departure.***

Cell Phones:	Phones will be collected upon arrival
Means of Travel:	Plane, Van
Minimum # of Students:	12
Maximum # of Students:	12
Cost:	\$2,700

SPROUT CREEK FARM

Poughkeepsie, New York



Sprout Creek Farm, established in 1982, is a center for education, farming, community building and spiritual growth. It is a place of work, or peace, intellectual inquiry and experiential learning. Students will be immersed in the simple life of living and working on a farm, where days begin very early and night falls equally early! Students will learn about sustainable food choices, ecology and animals on the farm. Meals will be homemade and fresh. At night there will be time for reflection and building community around a campfire or a board game. *A parent meeting is required before departure.*

Cell Phones:	Phones will be collected at the Farm
Means of Travel:	Airplane and Van
Minimum # of Students:	8
Maximum # of Students:	12
Cost:	\$1,900

Z - IN SEARCH OF THE SUSTAINABLE SOUL

Iquitos, Peru

This experience will include movie nights (Lost City of Z, Medicine Man, and more), followed by in depth discussions, and critical thinking sessions. Included in this experience will be an opportunity to work with two non-profit groups firsthand to see what this region of the world is like (when eco-travelers are not there). We will be working with students at the Sustainability and Education Center helping them peak their curiosity for learning and life. Students will experience uncomfortable moments both physically and emotionally. There is an expectation that you are looking to be challenged, an EXPECTATION that you are open to change and an EXPECTATION that you will find a way to immediately impact the world you live in.



Welcome to the jungle!

Cell Phones:	Phones will be collected in Iquitos
Means of Travel:	Airplane, Boat and Bus
Minimum # of Students:	12
Maximum # of Students:	12
Cost:	\$3,200

**ALL TRAVEL DATES WILL BE CONFIRMED AFTER GROUP
ASSIGNMENTS HAVE BEEN COMPLETED.**

